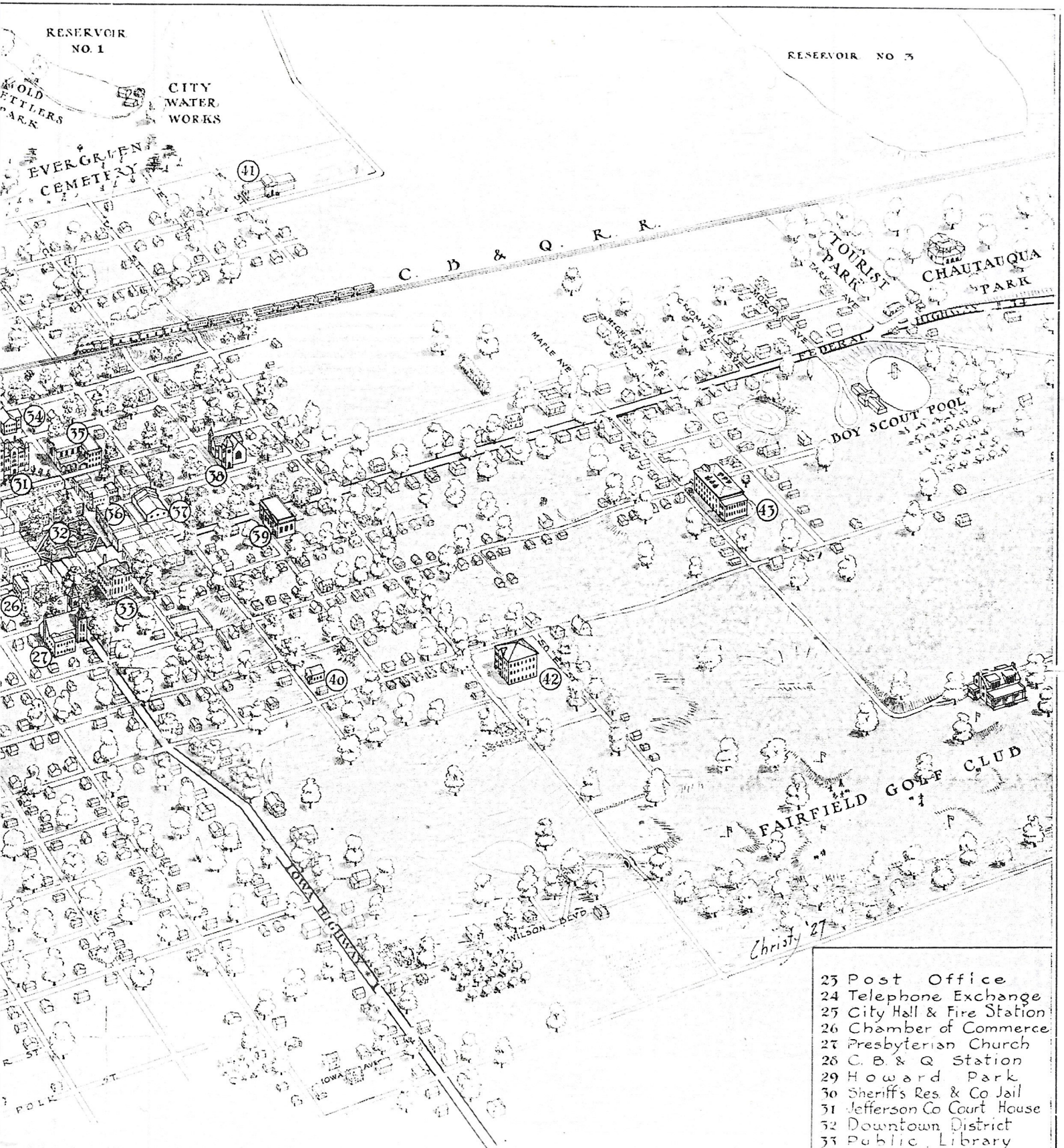


### KEY

- 1 Iowa Malleable Iron Co
- 2 The Dexter Co
- 3 Fairfield Glove & Mitten Co
- 4 Fairfield Engine Company
- 5 Turney Wagon Works
- 6 Roosevelt School
- 7 Heston & Anderson
- 8 Loudon Machinery Co
- 9 C. R. I. & P. Station
- 10 Iowa Electric Co
- 11 Free Methodist Church
- 12 Lincoln School
- 13 Hawkeye Pump Co
- 14 Mission Church
- 15 Thomas and Son
- 16 L. J. Nelson
- 17 St. Mary's Church
- 18 High School
- 19 Logan School
- 20 Harper Brush Works
- 21 English Lutheran Church
- 22 Baptist Church

# FAI

This Map Prepared for the c



# FAIRFIELD

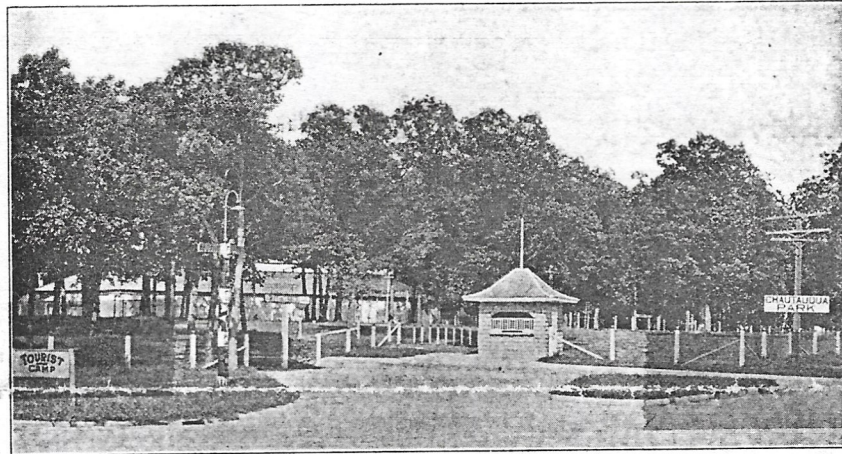
IOWA

Chamber of Commerce by Arthur Christensen, Architect

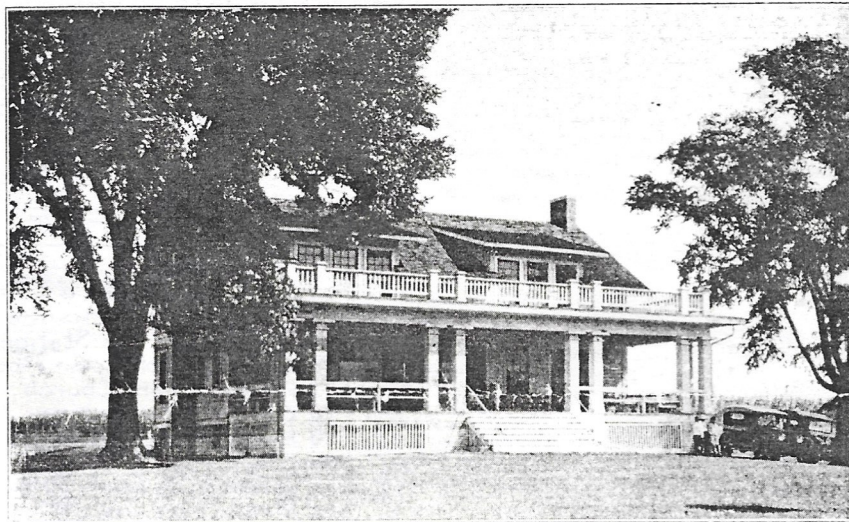
- 25 Post Office
- 24 Telephone Exchange
- 25 City Hall & Fire Station
- 26 Chamber of Commerce
- 27 Presbyterian Church
- 28 C. B. & Q. Station
- 29 Howard Park
- 30 Sheriff's Res. & Co Jail
- 31 Jefferson Co Court House
- 32 Downtown District
- 33 Public Library
- 34 Central School
- 35 Methodist Church
- 36 Western Union Office
- 37 Armory - 133rd Regiment  
Band Medical & Service Det.
- 38 Christian Church
- 39 Christian Science Church
- 40 A. M. E. Church
- 41 Mausoleum
- 42 Washington School
- 43 Jefferson Co. Hospital



Boy Scouts Swimming Pool



Fairfield Chautauqua Park



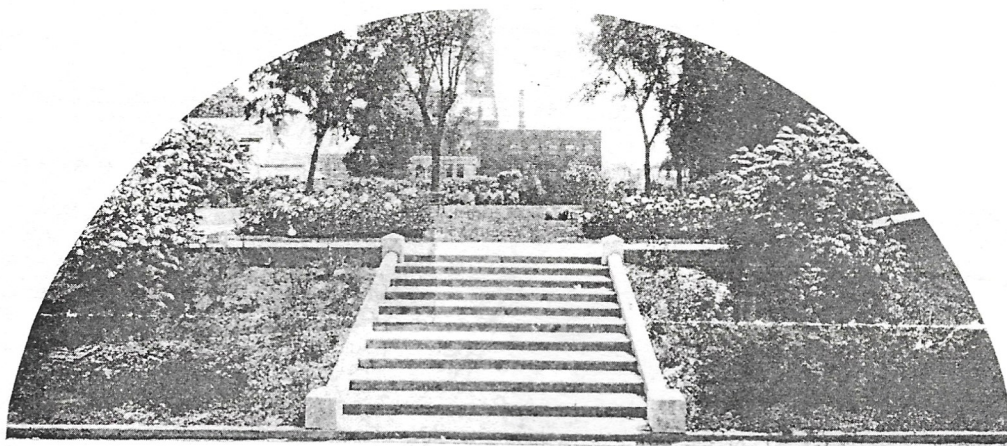
Fairfield Golf Club



## FAIRFIELD-- City of Industries

The value of the output of Fairfield's factories in 1929 was over \$6,000,000.00. Fifty years ago there were only small manufacturing concerns here, and even in 1914 the figure was less than half this amount, approximately a million and a half.

These facts prove that this is a real manufacturing town. The remarkable growth of industry during that time has not been a mere chance. An attitude has been created here that has encouraged and supported such ventures and has made possible this progress.



Entrance to Howard Park

The Chamber of Commerce, Inc., on behalf of the citizens of Fairfield, Iowa, extend to you a most cordial invitation to come to FAIRFIELD, IOWA, for the next meeting of your association. You will find many attractive things in our city that will lend enjoyment to a visit with us. Chautauqua Park is an ideal place for such a meeting. It is a beautiful thirty-acre grove equipped with all modern conveniences. There you will find for your meetings an assembly hall seating thirty-five hundred people and with fully equipped stage. Adjoining is a fully equipped modern tourist camp. Across the highway is one of the finest swimming pools in the state.

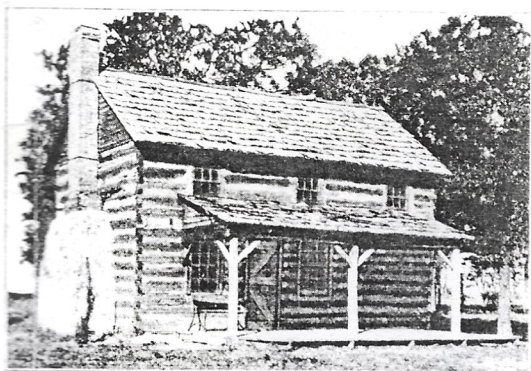
Fairfield offers many other attractions for your enjoyment. Those who golf will find pleasure at the Fairfield Golf Club, the Walton Lake course and the Stewart Golf course. You can amuse yourself with swimming and boating at beautiful Walton Lake. You will find Central Park and Howard Park restful for a period of relaxation. We also have two splendid auditoriums for downtown meetings if you should desire them.

You will find Fairfield most hospitable and we believe that you will enjoy a visit with us as thoroughly as we will enjoy having you as our guests.

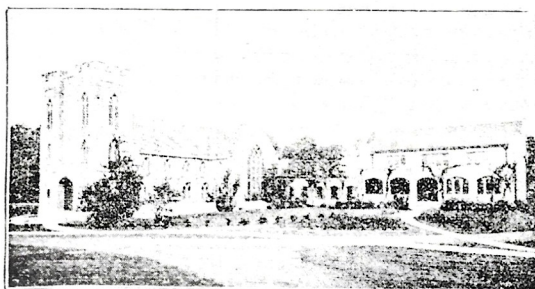
Respectfully,

CHAMBER OF COMMERCE, Inc.

Fairfield, Iowa



Bonnifield Log Cabin



Barhydt Chapel of Parsons College